

duraflo®

Dryer Exhaust Vent

Ideal for condominiums, town-houses, apartments and 2nd story laundry rooms.



duraflo®

Rangehood Exhaust Vent & Attached Collar



- Seamless leakproof body
- Vents kitchen range hoods and other large exhaust fans through the roof
- Attaches to 6", 7" or 8" duct
- Dual flapper system to prevent back draft and weather infiltration

DESCRIPTION	PART #	CTN. QTY
Black	6020BL	2
Brown	6020BR	2

GOOSENECK Rangehood Exhaust Vent Adapter Collar

- Attaches to 6", 7" or 8" duct

DESCRIPTION	PART #	CTN. QTY
Black	6021-4BC	8

duraflo®

Adapter Collar WITH BUILT-IN FLAPPER



Turn a roof vent into a bathroom exhaust vent!

Combine the weather protection of PROslantBack with bathroom exhaust fans!

- Built-in flapper prevents back draft
- Large available flange works with any roofing system
- Ideal for new home construction and existing homes
- Easily installs from the top of the roof deck or from inside the attic
- Fits 4", 5" or 6" flexible duct
- Available in black only

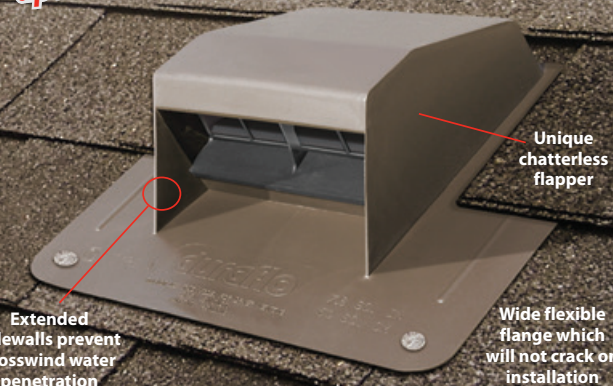
DESC.	PART #	SIZE	CTN. QTY.
Black	6035BL	14" x 14"	4

Install roof vent over new adapter collar

Dual flapper design



Exhaust Vent Series



- Seamless leakproof body
- Exhausts clothing dryer through the roof
- Large grill openings for safe dryer venting

Roof Dryer Vent with Flapper

DESCRIPTION	PART #	CTN. QTY
Black	6012BL	4
Brown	6012BR	4

Roof Dryer Vent with Flapper & Attached Collar

- Attaches to 4" or 5" duct

DESCRIPTION	PART #	CTN. QTY
Black	6013BL	6
Brown	6013BR	6
Weatherwood	6013WW	6

Roof Dryer Grill

DESCRIPTION	PART #	CTN. QTY
Black	6012-2BC	12

Used to convert a Duraflo Bathroom Exhaust Vent (6008, 6010, 6011) to a Roof Dryer Exhaust Vent without replacing the vent body.

Bathroom Exhaust & Roof Dryer Vent Adapter Collar

- Attaches to 4" or 5" duct

DESCRIPTION	PART #	CTN. QTY
Black	6010-1BC	8

duraflo®

www.duraflo.com

E-mail: duraflo@canplas.com

canplas®

DUR-EV-ENG-08-19

Canplas Industries Ltd.
500 Veterans Drive, P.O. Box 1800
Barrie, Ontario
Canada L4M 4V3
1-800-461-5300
Tel: (705) 726-3361
Fax: (705) 726-2186

duraflo®
WE KNOW VENTILATION

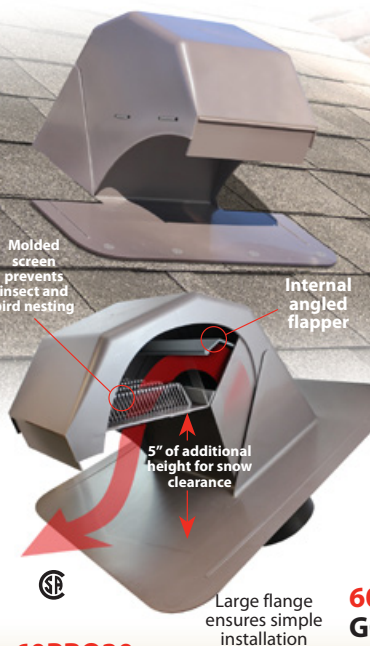


duraflo® Gooseneck® ROOF EXHAUST VENT

350+
CFM

For high performance bathroom fans and standard rangehood fans

- Weather protection with 5" of additional height for snow clearance
- Patented design adds additional weather protection, directs and deflects precipitation away from vent openings
- Flapper can still open with low performance bath fans
- Attaches to 4", 5" or 6" duct
- Additional collar available which fits a 6", 7" or 8" duct
- Available in: black, brown, weatherwood and grey
- 20 sq. in. of net free area if used as an intake vent (remove flapper)



60PRO30 GOOSENECK BATHROOM EXHAUST VENT - WITH COLLAR

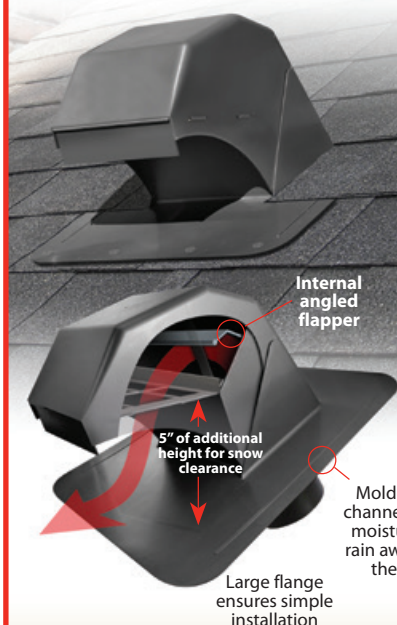
Can be used with standard rangehood fans

DESCRIPTION	PART #	CTN. QTY.
Black	60PRO30BL	1
Brown	60PRO30BR	1
Grey	60PRO30G	1
Weatherwood	60PRO30WW	1

60PRO31 GOOSENECK BATHROOM EXHAUST VENT - WITHOUT COLLAR

Can be used with standard rangehood fans

DESCRIPTION	PART #	CTN. QTY.
Black	60PRO31BL	1
Brown	60PRO31BR	1
Grey	60PRO31G	1
Weatherwood	60PRO31WW	1



6032 GOOSENECK ROOF DRYER EXHAUST VENT - WITH COLLAR

DESCRIPTION	PART #	CTN. QTY.
Black	6032BL	1
Brown	6032BR	1
Grey	6032G	1
Weatherwood	6032WW	1

Ideal for condominiums, townhouses, apartment buildings and homes with an upstairs laundry room

- Provides weather protection with 5" of additional height for snow clearance
- Attaches to 4", 5" or 6" duct
- Additional collar available which fits a 6", 7" or 8" duct
- Available in 4 colours: black, brown, weatherwood and grey

6033 GOOSENECK ROOF DRYER EXHAUST VENT - WITHOUT COLLAR

DESCRIPTION	PART #	CTN. QTY.
Black	6033BL	1
Brown	6033BR	1
Grey	6033G	1
Weatherwood	6033WW	1



duraflo® Bathroom Exhaust Vent

Molded screen prevents insect and bird nesting

Unique chatterless flapper

Extended sidewalls prevent crosswind water penetration



- Seamless leakproof body
- Exhausts bathroom fan through the roof
- Attaches to 4" or 5" duct
- Code regulated insect grill

Bathroom Exhaust Vent with Flapper & Attached Collar

DESCRIPTION	PART #	CTN. QTY.
Black	6011BL	6
Brown	6011BR	6
Grey	6011G	6
Weatherwood	6011WW	6

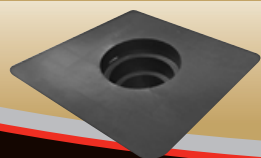
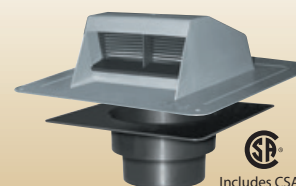
Bathroom Exhaust Vent with Flapper & Unattached Collar

- Collar is detached to allow trades to work independently

DESCRIPTION	PART #	CTN. QTY.
Black	6010BL	8
Brown	6010BR	8
Grey	6010G	8

Bathroom Exhaust Vent with Flapper

DESCRIPTION	PART #	CTN. QTY.
Black	6008BL	4
Brown	6008BR	4
Grey	6008G	4
Weatherwood	6008WW	4



DESCRIPTION	PART #	CTN. QTY.
Black	6030-4BC	8

GOOSENECK VENT ADAPTER COLLAR 4", 5", 6"